

TEMPORARY RESIDENTS PROGRAM

General conditions of enrolment for temporary residents

Thank you for choosing the New South Wales Department of Education to deliver a quality education program to your child. New South Wales government schools offer a world-class standard of education from the largest education provider in Australia.

This fact sheet summarises the conditions of enrolment for temporary residents to enrol in a New South Wales government school. For guidelines on the eligibility and procedures for the enrolment of non-Australian citizens in New South Wales government schools, refer to the *Enrolment of Non-Australian Citizens - Procedures and Eligibility*.

DE International

The Temporary Residents Program is part of DE International. The Temporary Residents Program gives advice and support to enrol temporary residents into New South Wales government schools. The program accepts enrolment in primary school and high school from Kindergarten to Year 12 in consultation with the accepting school.

Risk assessment

All students seeking enrolment are subject to the New South Wales Department of Education policy on enrolment in a New South Wales government school, including a risk assessment. To find out more about going to a New South Wales government school, please visit education.nsw.gov.au/public-schools/going-to-a-public-school.

Visa requirements

Your child must hold a current valid visa to reside in Australia and meet specific travel, entry and residency conditions determined by the Australian Department of Home Affairs (DHA). Enrolment in a New South Wales government school is generally accepted for the length of the visa, subject to policy and the terms and conditions of admission.

Non-Australian citizens applying to enrol in a New South Wales government school must provide travel documentation as proof of identity and residency status. Refer to *Proof of Identity and Residency Status* guidelines.

Norfolk Island permanent residents

Norfolk Island permanent residents may be admitted directly to a New South Wales government school in the same manner as an Australian citizen.

New Zealand citizens

New Zealand citizens who hold a New Zealand passport may be admitted directly to a New South Wales government school in the same manner as an Australian citizen.

Temporary residents

Students holding a temporary resident visa are subject to enrolment through the Temporary Residents Program. Refer to the *Visa subclasses & enrolment conditions* and the *temporary resident visa* fact sheet.

Dependants of international students

Students holding a dependent student visa (subclass 500, 570, 572, 573, 574, 576) are subject to enrolment through the Temporary Residents Program. Refer to the *Visa subclasses & enrolment conditions* and the *dependants of an international student* fact sheet.

Visitor visa students

Students holding a visitor visa are subject to enrolment through the Temporary Residents Program. Refer to the [Visa subclasses & enrolment conditions](#) and the [visitor visa](#) fact sheet.

Application process

To enrol in a New South Wales government school, temporary residents must submit an application to the Temporary Residents Program in accordance with the [Enrolment of Non-Australian Citizens - Procedures and Eligibility](#).

Education fee

In New South Wales most temporary resident students pay the temporary resident administration fee and education fee to enrol in a government school. The fee is generally calculated using the visa subclass held by the student. In accordance with Section 31A (4) and (5) of the [Education Act 1990](#), failure to pay the education fee may result in enrolment termination. Refer to the [Visa subclasses & enrolment conditions](#) and the [Education fee](#) fact sheet.

Selecting a school

If your child holds a current valid visa and resides in New South Wales, they may apply to enrol in the New South Wales government primary school or high school closest to their residential address. A request for an out of area enrolment may be considered by the school enrolment panel, according to department policy and subject to selection criteria such as availability of appropriate staff and classroom accommodation.

School at capacity

If a school is at capacity, temporary residents may be referred to the next available school/s with capacity.

Selective High Schools and Opportunity Classes

Temporary residents are not eligible to enrol in selective high schools including agricultural high schools, the selective component of comprehensive high schools and Opportunity Classes (OC) in primary schools.

Immunisation

The Department of Education supports the immunisation of children before they enrol in a New South Wales government school to protect against outbreaks of infectious diseases. You must provide evidence of your child's immunisation status directly to the school at the time of enrolment in the form of an immunisation certificate, a letter from a registered medical practitioner or community health centre. Refer to <https://education.nsw.gov.au/student-wellbeing/health-and-physical-care/immunisation>

English as an Additional Language/Dialect education

The New South Wales Department of Education provides *English as an Additional Language or Dialect (EAL/D)* support to develop English language competence so your child can fully participate in schooling and independently pursue further education and training. The department provides EAL/D support in primary schools, high schools, Intensive English Centres (IECs) and the Intensive English High School (IEHS). The availability of EAL/D support varies between schools, depending on the number of EAL/D students enrolled. Refer to the [Visa subclasses & enrolment conditions](#) and the [EAL/D](#) fact sheet.

Living arrangements for your child

The New South Wales Department of Education requires all school-aged students who are under 18 years of age, and who hold a visitor or temporary resident visa, to live with their parent during any period of enrolment in a New South Wales government school. In the extenuating circumstance where the child is not residing with the parent, the parent must nominate a relative/carer, who must be:

- a direct relative of the child (brother, sister, step-parent, step-brother, step-sister, grandparent, aunt, uncle, niece or nephew, step-grandparent, step-aunt, step-uncle, step-niece or step-nephew).
- over 21 years of age and of good character.
- able to provide appropriate care and supervision of the child.

Change in details

While your child is enrolled in a New South Wales government school as a temporary resident, you must inform the Temporary Residents Program if your child:

- changes address.
- is granted a new visa by the Department of Home Affairs.
- intends to transfer to another New South Wales government school.
- intends to leave school.

Application process flowchart for parents

Refer to the diagram on page 4 of this document.

Application process flowchart for school staff

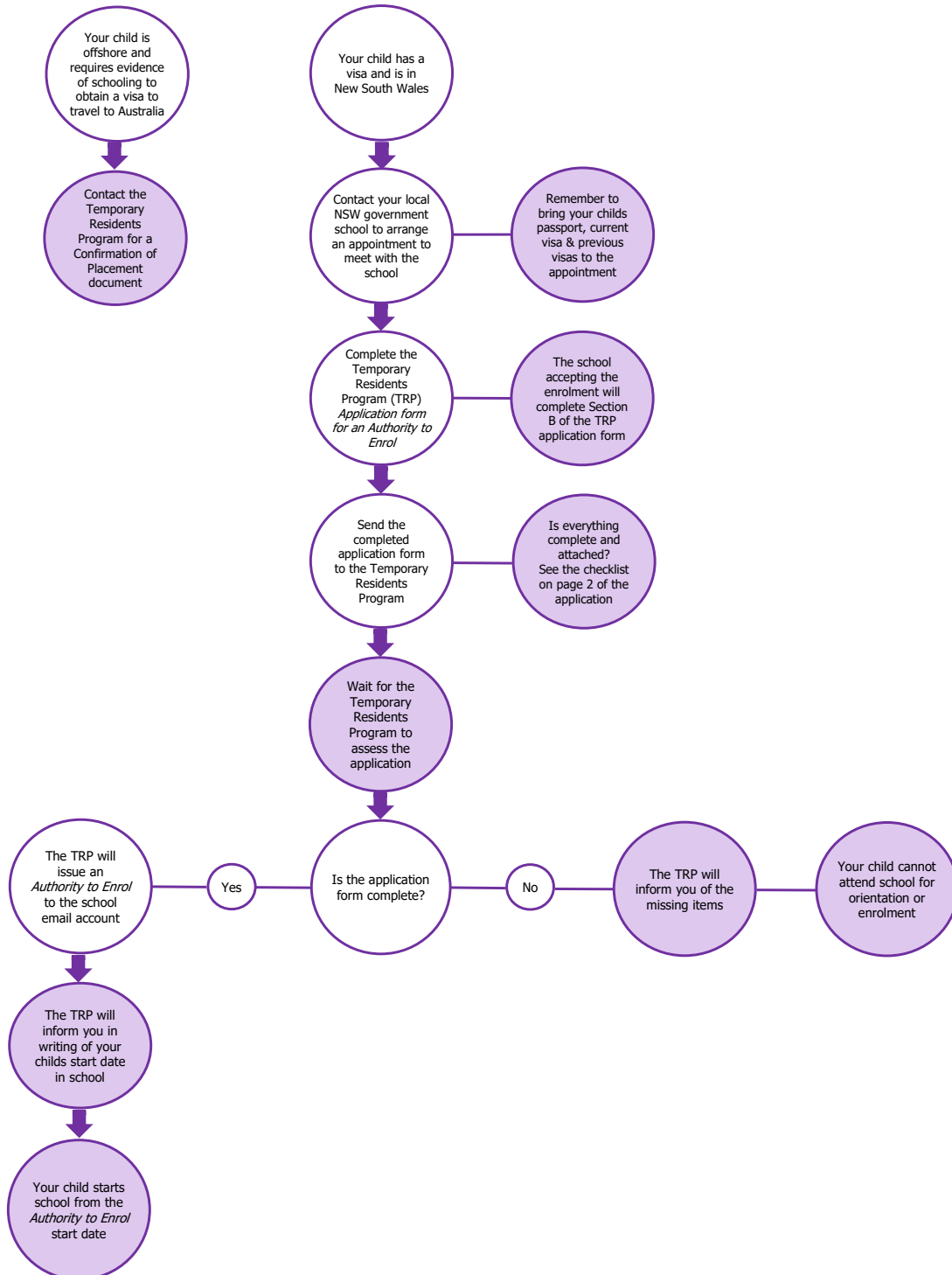
Refer to the diagram on page 5 of this document.

Need more information

To find out more about the Temporary Residents Program, please visit deinternational.nsw.edu.au/trp or call our Customer Service Team on 1300 300 229 (then option 1). To find out more about going to a New South Wales government school, please visit education.nsw.gov.au/public-schools/going-to-a-public-school.

Guide for parents

How to enrol a temporary resident into a New South Wales government school through the Temporary Residents Program (TRP)

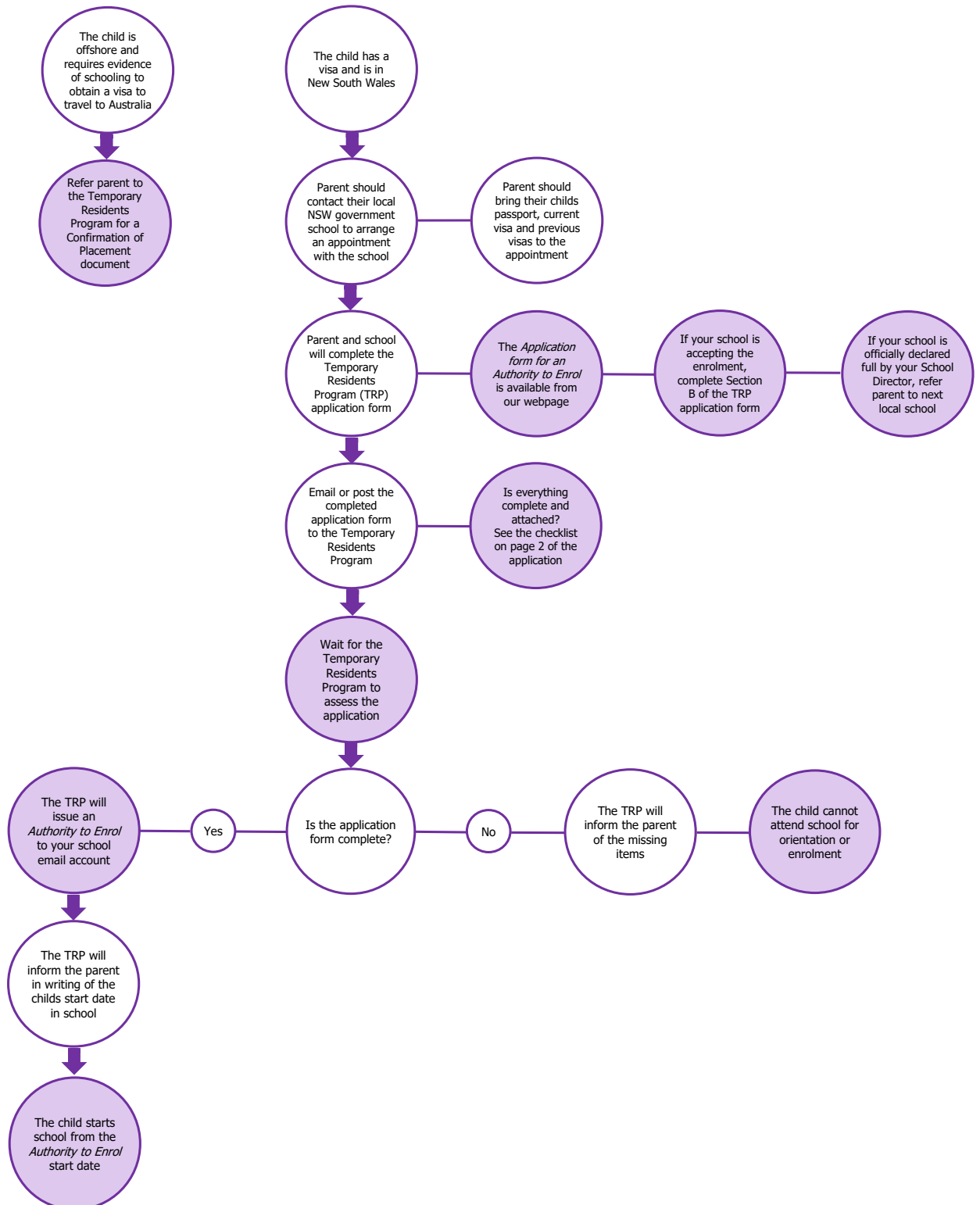


For information on the Temporary Residents Program, please contact:

T 1300 300 229 (then option 1)
T +61 2 9244 5555 (outside Australia)
E tempvisa@det.nsw.edu.au
W www.deinternational.nsw.edu.au/trp

Guide for school staff

How to enrol a temporary resident into a New South Wales government school through the Temporary Residents Program (TRP)



For information on the Temporary Residents Program, please contact:

T 1300 300 229 (then option 1)
T +61 2 9244 5555 (outside Australia)
E tempvisa@det.nsw.edu.au
W www.deinternational.nsw.edu.au/trp